



You are hereby summoned to attend a Planning Committee Meeting to be held at the Slow & Easy on Monday 8th July 2024 due to commence at **8.15 p.m.**, for the purpose of transacting the following business:

AGENDA

- 1) **Apologies** – To receive apologies and to approve reasons for absence.
- 2) **Declarations of interest** – To receive from members, disclosure of any (a) Disclosable Pecuniary Interests and, (b) Other Disclosable Interests as required under Chapter 7 of the Localism Act 2011 and Lostock Gralam Parish Council Code of Conduct.
- 3) **Planning Application –**

To consider planning application 23/02766/FUL, Land At Winnington Avenue Northwich, Re-engineering, remediation (through the creation of a development platform), restoration, and subsequent installation of a commercial scale photovoltaic solar park including a battery energy storage system (BESS) and other associated development.

Whilst the above planning application is not within the parish, the HGV route does pass through Lostock Gralam via Manchester Road.

Cllrs are asked submit responses to the Clerk via email before 4.30pm on Monday 8th July, stating whether you object, and any accompanying comments. Comments and responses will then be collated and a vote of at least three parish councillors will be made after the Finance Working group meeting in the Slow & Easy at 8.15pm.

Non-Finance Working Group Cllrs may send their apologies, but please submit stance via email before 4.30pm on 8th July.

L. Sandison

Mrs L Sandison
Clerk to the Council
Tuesday 2nd July 2024

Please see here some basic information, the full planning application documentation can be found at [See or comment on planning applications | Cheshire West and Chester Council](#) and search 23/02766/FUL.

In order to spread out the number of HGV trips, and dilute the associated traffic-related impacts across the local highway network, 50% of HGVs will be directed to the north along the A533 Winnington Lane, towards the A533 Runcorn Road and the A49. The remaining 50% of HGVs would be directed to the south along the A533 Winnington Lane, through Northwich Town Centre and towards the A556.

The routes for construction related traffic are shown on **Image 3.1** and **Image 3.2**.

Image 3.1 – HGV Construction Traffic Routes, towards A49 Warrington Road

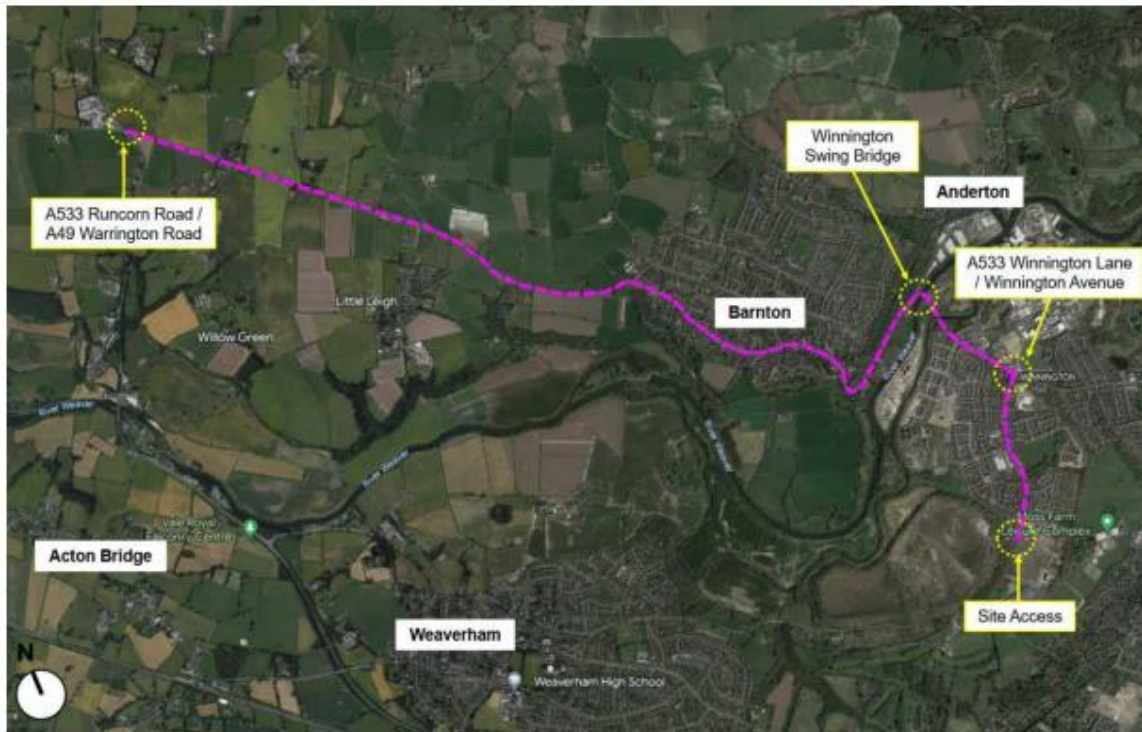
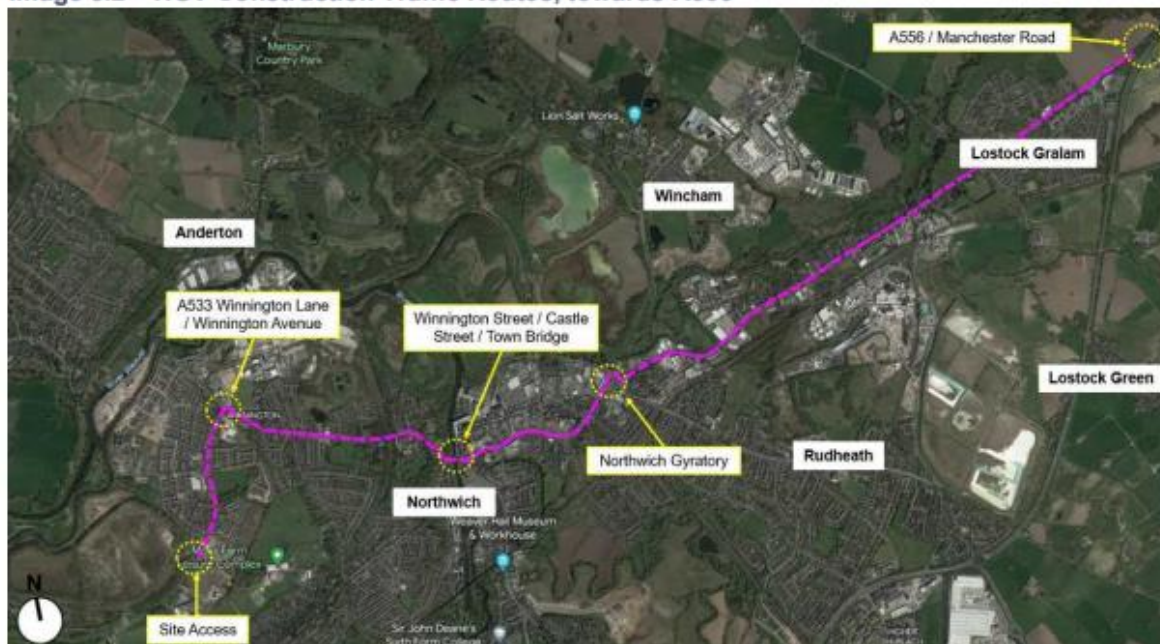


Image 3.2 – HGV Construction Traffic Routes, towards A556



The operating hours for construction activities will be restricted, where possible, to the following times:

- i) Monday to Friday 07:30 – 17:00; and
- ii) Saturday 07:30 – 13:00.

There would be no deliveries on Sundays or Bank Holidays or after 13:00 on a Saturday unless such work is associated with an emergency or with prior written consent of CWACC.

Forecast Construction Vehicle Trip Generation

One of the biggest impacts of any construction projects is the temporary increase in vehicular traffic. The following subsections set out the number of HGV and contractor vehicle movements that will be require access to the Site during the Site remediation phase of the Proposed Development, the associated routing strategy of these vehicles, and how they will be managed.

HGV Trip Generation

The vast majority of the vehicle trip generation will be associated the delivery of non-hazardous material to the Site. Specifically, a total of 1.38Mm³ (or 27.7 million tonnes) of soil will be required to be imported to the Site via tipper vehicles with 20T payloads.

Depending on the length of the Site remediation phase (i.e., 4 or 5 years), the following HGV trips are forecast to be generated during peak activities:

- i) 4-year scenario – 241 two-way HGV movements per day, or 1,327 two-way HGVs per week, on average. This equates to 25 two-way HGV trips per hour, or circa 1 two-way HGV trip every 3-minutes; or
- ii) 5-year scenario – 193 two-way HGV movements per day, or 1,062 two-way HGVs per week, on average. This equates to 20 two-way HGV trips per hour, or circa 1 two-way HGV trip every 3-minutes.